



## ABOUT LIBERTY!

Liberty is a unique organisation that celebrates disabilities by empowering our participants to embrace being unique with coordinated compassionate care delivered by a team of passionate and experienced individuals working for you, with you.

We pride ourselves on being an inclusive organisation that welcomes people with diverse disabilities and see challenges as an opportunity to grow!

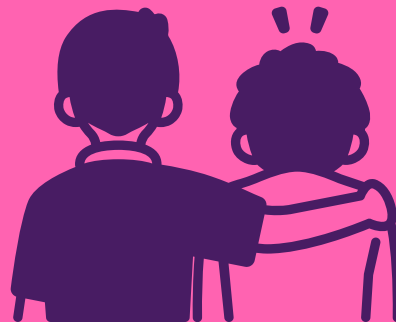
## Contact us!

 (03) 5275 8627

 [info@libertydisabilityservices.com.au](mailto:info@libertydisabilityservices.com.au)

 1-3 Agra St, Norlane  
Vic 3214

 [www.libertydisabilityservices.com.au](http://www.libertydisabilityservices.com.au)



## COMMUNITY MENTORS

NO WAITLIST



Liberty Disability Services

# WHAT IS A COMMUNITY MENTOR



The Community Mentor program is a service that offers participants one-to-one support in a variety of areas within their daily life.

A Community Mentor (otherwise known as a Support Worker) is a professionally trained person who provides social, emotional and practical support to someone living with a disability.

They work with you as an understanding and compassionate mentor who offers you guidance in navigating both social and community settings- or simply in the comfort of your own home



## WHAT CAN THEY HELP ME WITH?

- Community access (catching the bus, attending appointments, visiting the playground & much more)
- Attending community events (music concerts, markets, sporting events)
- Participation in recreational activities (sports competitions, art classes)
- Complete practical household tasks (tidy the kitchen, feed the pets, take out the bins)
- Filling out that never ending pile of paper-work!
- Administer medications and other personal care (showering, getting dressed)
- Getting ready for school, work ect.
- Grocery shopping
- Visiting friends and family
- And much, much more!



## FREQUENTLY ASKED QUESTIONS

### HOW DO I GET A COMMUNITY MENTOR?

If Core supports are funded in your NDIS Plan, its as simple as giving us a call or email! If you aren't funded, you can still give us a call and we can work out how to support you to get it!

### WHAT HAPPENS IF MY COMMUNITY MENTOR LEAVES?

Unfortunately sometimes people change jobs, whilst we wish we could keep our staff forever, we always support them to continue to grow. If your Community Mentor leaves, we have a process in place to ensure you are well supported by a friendly and familiar face you met at the beginning! We will always communicate and work quickly to ensure you are never without support.

### DO I STILL HAVE CHOICE & CONTROL?

Always! This is your NDIS journey, our role is to support you to work towards your goals!

A community mentor is there to help you build your capacity and confidence so that you can live as indepently as possible.